

Xerox® Versant® 4100 Press

Let's reinvent the
way we build profit.



xerox™

The smart, versatile and profit-ready Xerox® Versant® 4100 Press.

The smartest, most versatile press money can buy.



The Versant brand is built on smarts – but would you believe it just got smarter?

In today's print market, success means adaptation. You're doing it. Your competition is doing it. And Versant is adapting too.

Mid-production profit was once driven by volume. And sure, it's still an important part of the mix for most. But if you're looking for a way to squeeze profit from smaller jobs with faster turnarounds, and still be able to sprint when you need to, have we got the press for you.

HELLO, VERSANT.

We've reinvented our top mid-production press with even more smart automation for virtually touch-free quality control, and extended application options with the ability to print on media up to 400 gsm*.

THE FULL PRESS.

You'll get print speeds of up to 100 ppm without sacrificing image quality. Load up with envelopes, and print on stock as small as 98 x 146 mm and as long as 330 x 660 mm. Labels, tabs and special substrates like synthetics, polyesters, window clings, transfer paper and magnetic stocks. Plus, you'll get the perfect marriage of tried-and-true capabilities and the latest Xerox technologies:



Simplify and automate otherwise time-consuming tasks like image-to-media alignment, density uniformity, colour calibration, profiling and more with our Full Width Array (FWA).



Xerox® EA Toner with incredible 2400 x 2400 dpi Ultra HD Resolution with 10-bit RIP rendering – still an industry quality benchmark.



Robust inline feeding and finishing options for a wide range of applications, from simple folds and staples to full bleed, square edge face-trimmed booklets so you can meet diverse customer demands.



All new Xerox® PredictPrint Media Manager Software for powerful, cloud-based stock management.

* Heavyweight media from the Xerox Versant 4100 Tested Substrate List (TSL)

Our exclusive Full Width Array revolutionises press setup and optimisation.

Add Xerox® PredictPrint Media Management Software and make stock-specific configuration scan-and-go easy.

SMARTER STOCK MANAGEMENT STARTS WITH A SIMPLE SCAN.

We've found a way to help get your print – and profit – in motion. Backed by crowd-sourced cloud data and powerful Artificial Intelligence (AI), PredictPrint's Stock Wizard makes optimising the Versant 4100 Press for a specific stock scan-and-load easy.

SCAN. LOAD. GO.

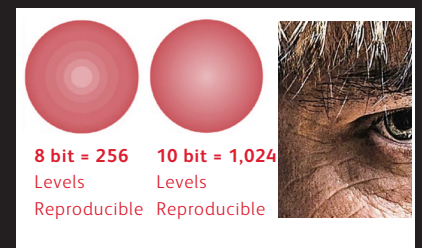
In the past, you had to guess or manually tweak multiple settings to optimise image quality. PredictPrint Media Manager Software changes all that. Anyone can quickly – and correctly – make the necessary stock-specific adjustments in a few easy steps.

Just scan your desired media's barcode, load it in a tray or feeder and follow the simple PredictPrint Wizard on a very short road to automated output perfection.

PredictPrint integrates with Versant's Full Width Array to adjust alignment, image transfer and more – including colour calibration and profiling – by drawing on a cloud-based repository of stock settings. PredictPrint collects and assimilates real-world data from other Versant users to continually fine-tune stock settings over time, for ever-faster, easier stock management.



Ultra HD combines 1200 x 1200 RIP rendering with 2400 x 2400 imaging at the engine. While other presses may RIP at 1200 x 1200, Versant® has a 10-bit pipeline to send data to the engine. **That's up to four times more pixel data than other presses.**



MAX OUT YOUR MEDIA CAPABILITIES.

The Versant® 4100 is the kind of future-proof print platform you can build a business on.

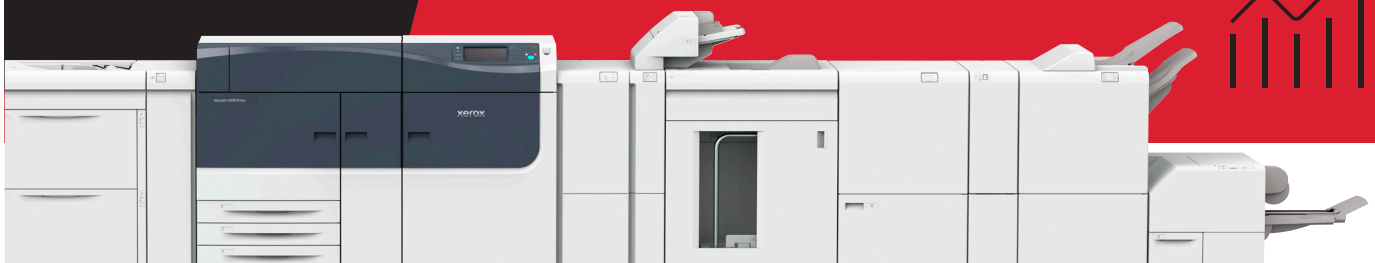
The perfect synthesis of exclusive, field-proven technologies and innovative software solutions redefine what's possible in print.

+ PLUS

- Superior media handling to 400 gsm duplex
- Speeds up to 100 ppm
- Duty Cycle up to 1.2 million prints
- Full Width Array
- PredictPrint Media Manager Software
- Ultra HD with EA toner
- Production Accurate Registration (PAR)

+ PLUS

- Advanced fusing with mixed media productivity settings
- Cooling module
- Auto sheet clearing
- Advanced decurling
- Robust feeding and finishing options
- Unparalleled productivity, colour adjustment, and automation



Xerox® Versant® 4100 Press

PRODUCTIVITY/PRINT SPEED

- Average Monthly Print Volume: Up to 250,000
- Duty Cycle: 1.2 million
- 100 ppm (A4), 52-300 gsm
- 80 ppm (A4), 301-400* gsm

IMAGE QUALITY

- 2400 x 2400 dpi VCSEL ROS for sharpness, detailed shadows and bright highlights
- 1200 x 1200 x 10 RIP rendering without down sampling for Ultra HD performance
- Halftone Screens for smoother, crisper resolution and improved gradients
 - 150, 175, 200, 210, 300, 600 Clustered Dot
 - 150, 200, 300 Rotated Line Screen
 - FM Stochastic Screen

TECHNOLOGY

- Full Width Array (FWA) automatic press calibration and stock profiling eliminates time-consuming operator-initiated tasks with greater productivity and quality
- FWA provides perfect front-to-back alignment adjustments, optimises tone coverage for smooth to textured stocks and delivers consistent toner coverage, safeguarding image integrity across the page.
- Ultra HD Resolution Technology with four times more pixels than competitive presses
- Production Accurate Registration (PAR) for consistent front-to-back registration
- Xerox® PredictPrint Media Manager Software uses cloud-based AI to automatically optimise the press based on what is in the drawer – for faster media management with no need to manually adjust critical quality settings
- Automated Sheet Clearing for less downtime and more productivity
- Closed-Loop Process Controls make quality adjustments in real time
- Compact Belt Fuser for higher speeds and image consistency, runs heavyweight and mixed media
- EA Low Melt Dry Ink toner with small, uniform particles, fine lines and overall image quality
- Bias Charge Rolls with auto-cleaning technology improve press productivity

- Smart Decurler calculates coverage, paper and humidity for the flattest possible output
- Modular feeding and finishing options for configuration versatility
- Xerox® SMart Kit® Replaceable Unit customer replaceable items
- IEC 62368-1: Versant conforms to the most recent safety standards for information technology equipment

PAPER

Format/Sizes

- Maximum size: 330.2 x 660.4 mm
- Maximum standard sheet: 330.2 x 488 mm
- Minimum size: 98 x 146 mm

Flexibility/Weights

- Coated, uncoated, envelopes, tabs, polyester/synthetic, textured, coloured, banner, custom media and mixed-stock printing
- 52-400 gsm uncoated and coated
- 52-256 gsm from Trays 1-3
- 52-400 gsm from Bypass
- 52-400 gsm from Advanced OHCF

Capacity/Handling

- 5,900 sheets standard (80 gsm)
 - Trays 1-3: 550 sheets each, maximum size 330.2 x 488 mm, minimum size 139.7 x 182 mm
 - Bypass: 250 sheets, maximum size 330.2 x 660.4 mm, minimum size 98 x 146 mm
 - Adv OHCF, 2 trays, 4,000 sheets, maximum size 330.2 x 488 mm, minimum size 98 x 148 mm
- 9,900 sheets maximum (80 gsm)
 - Trays 1-3: 1,650 sheets each
 - Bypass: 250 sheets
 - Optional Dual Adv OHCF, 4 trays, 8,000 sheets
- Registration on standard sheets:
 - Internal Trays, and standard-sized stocks greater than 300 gsm, +/- 1.0 mm
 - Adv OHCF, all standard sized stocks 52-300 gsm, +/- 0.5 mm
- Auto-Tray Switching/Reload-While-Run Capability
- Simplex 400* gsm (4/0 impressions)
- Auto-Duplex 400 gsm (4/4 impressions)

PRINT SERVER OPTIONS

- Xerox® EX 4100 Print Server Powered by Fiery®
- Xerox® EX-P 4100 Print Server Powered by Fiery®

ELECTRICAL

- Base Configuration: 208-240 V, 50/60 Hz, 30 A circuit (sole use)/single phase, NEMA 14-30
- Additional electrical required for print server and feeding/finishing devices:
 - 115 VAC, 15 A for 60 Hz or 220 VAC, for 50 Hz (Western Hemisphere)
 - 220-240 V, 10 A, 50 Hz (Europe)

DIMENSIONS/WEIGHT OF BASE PRESS

- Height: 1,110 mm
- Width: 2,670 mm
- Depth: 807 mm
- Weight: 740 kg

* Heavyweight media from the Xerox® Versant 4100 Tested Substrate List (TSL)

For more information, go to www.xerox.co.uk/en-gb/digital-printing/digital-presses/xerox-versant-4100.